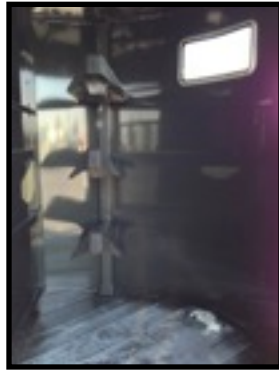


# 500 Combo

# Economy Stock Combo (Bumper Pull)

<b>G.V.W.R</b>	7,000 #	<b>CENTER GATE</b>	None
<b>COUPLER</b>	2" Bulldog Coupler	<b>DIVIDER</b>	Slant Load with Full Head Divider
<b>AXLES</b>	Tandem 3,500#	<b>REAR DOOR</b>	Standard Full Swing with 1/2 Slider
<b>SUSPENSION</b>	Dexter Eye-to-Eye Springs	<b>REAR OPENING</b>	Tail Light Gussets, Pin/Spool Latch for Gate
<b>BRAKES</b>	Electric brakes on all axles	<b>FENDERS</b>	Steel Teardrop
<b>TIRE</b>	16" Radial	<b>WINDOW</b>	1 - Large Oval
<b>WHEEL</b>	16", 6-bolt	<b>WIRING</b>	14 gauge in Conduit with Junction Box
<b>SPARE</b>	Spare Carrier Included	<b>ELECTRIC PLUG</b>	7-Way RV Style
<b>FRAME</b>	2 x 3 Angle	<b>INTERIOR LIGHTS</b>	None
<b>TONGUE</b>	3" Channel	<b>EXTERIOR LIGHTS</b>	D.O.T. Stop, Tail, Turn and Clearance -LED
<b>CROSSMEMBERS</b>	2 x 2 Angle on 16" centers	<b>PRE-PREP</b>	3-Step Acid Washed with Phosphorus Solution
<b>JACK</b>	7,000# Top Wind with wheel	<b>PREP</b>	Fenders & Roof Joints Sealed
<b>FLOOR</b>	2" Pressure Treated Pine	<b>PRIMER</b>	Rust Resistant Epoxy Primer
<b>SIDES</b>	48" high embossed, 16 gauge	<b>PAINT</b>	Baked-on High Solid Urethane
<b>SIDE UPRIGHTS</b>	1 x 2 Tubing	<b>PINSTRIPES</b>	Painted Pinstripes
<b>SIDE DOOR</b>	Solid Entrance Door for Enclosed Dressing Room	<b>DECK HEIGHT</b>	Approx. 14"
<b>ROOF</b>	18 gauge Metal with Bows on 24" centers	<b>GRAVEL GUARD</b>	Deluxe Aluminum Diamondplate
<b>ROOF RADIUS</b>	6" Roof Radius	<b>REFLECTIVE TAPE</b>	Required D.O.T. Reflective Taping
<b>NOSE CAP</b>	Round, Square or V-Nose	<b>SAFETY</b>	Emergency Breakaway switch & battery backup
<b>TACK AREA</b>	Swing Wall Dressing Room with Saddle Racks	<b>SAFETY CHAINS</b>	3/8" Heavy Duty with Safety Latch Hooks



Trailer shown with optional 7" Tall height

## SUGGESTED RETAIL PRICE

Length	Width	Height	Number of Stalls	Dressing /Tack Compartment	Axle	Tires	MSRP
12'	6'	6'6"	2-Horse (40" stalls)	30" short wall x 60" long wall	Tandem 3500 # Spring	15" Radial	\$6,339
14'	6'	6'6"	2-Horse (40" stalls)	40" short wall x 88" long wall	Tandem 3500 # Spring	15" Radial	\$6,619
16'	6'	6'6"	3-Horse (38" stalls)	32" short wall x 78" long wall	Tandem 3500 # Spring	16" Radial	\$7,301

## OPTIONS PRICING

6'8" Width	\$434	15" Full Spare (Tire & Wheel)	\$193
6" Additional Height (per 6")	\$397	16" Full Spare (Tire & Wheel)	\$252
		Interior Light	\$37
Option for 5' wide only, DEDUCT	\$143	Full Rear Drop Ramp (with mat)	\$508
V-Nose	\$122	Solid Rear Gate (no slider)	N/C
		Solid Dressing Room Wall (does not swing)	\$330